





IMTS
2014

STRA

LM

LM



Google™

self-driving car

8VVD936



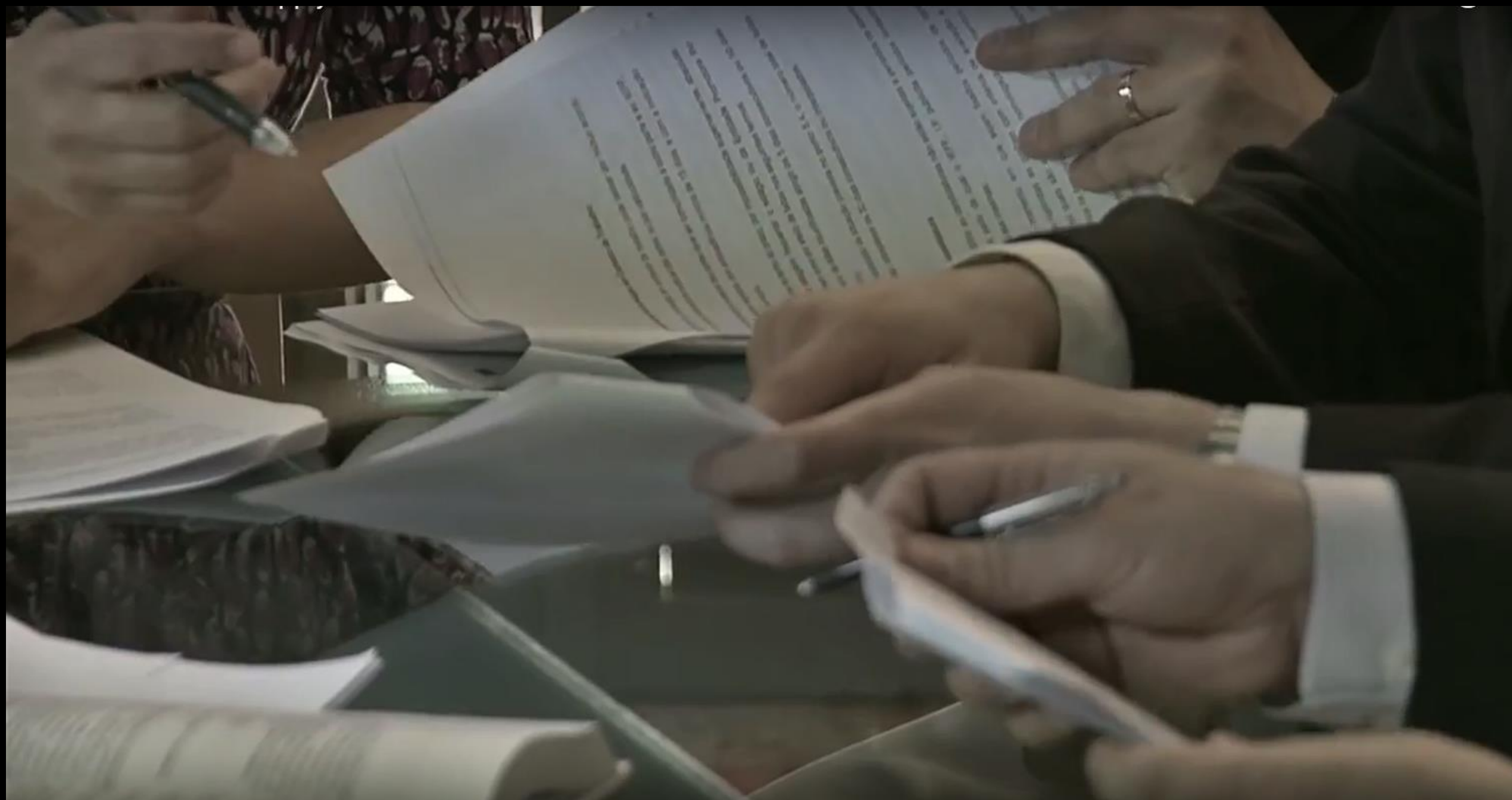
DELIVERY ZONE



LANDING MODE

amazon





The background features a complex network of glowing green and blue lines and spheres, resembling a molecular structure or a data network. The lines are thick and have a slight gradient, while the spheres are solid and have a soft glow. The overall aesthetic is futuristic and technological.

Say Hello to Watson

Cognitive computing is forging a new partnership between humans and computers that scales and augments human expertise.





DISINTERMEDIATION

Hotels



Books



Retail Shops



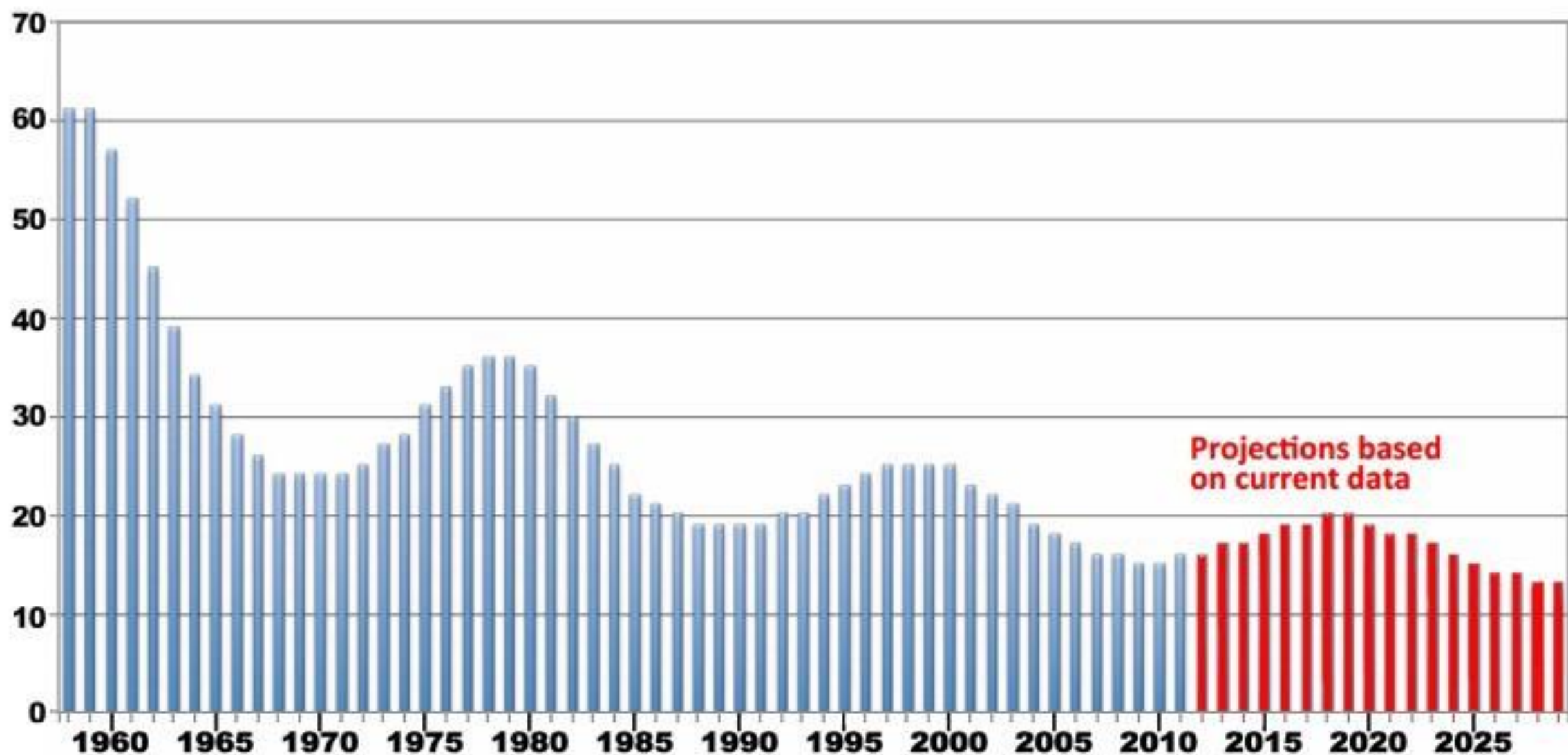
Publisher



Taxis



Average company lifespan on S&P 500 Index (in years)



Connected Devices

	People	Networked Devices
2013	7 billion	7 billion
2015	7.3 billion	15 billion
2022	8 billion	75 - 300 billion



TECHNOLOGY

BRAND

WORKPLACE

TALENT

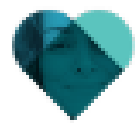
Your culture

Companies with high engagement levels have 3.9 times the earning per share of their industry peers and competitors

The logo consists of the word "GALLUP" in a white, serif, all-caps font, centered within a dark gray rectangular background. A registered trademark symbol (®) is located at the top right of the word.

GALLUP®





Chloe Varelidi

@varelidi



Follow

Have waited too long to say this. I'm an employee of [@mozilla](#) and I'm asking [@brendaneich](#) to step down as CEO.

RETWEETS 239 FAVORITES 184

5:12 PM - 27 Mar 2014



Related headlines

Mozilla under fire for new CEO's anti-gay past

msnbc @msnbc

Mozilla CEO Brendan Eich resigns

SFGate @SFGate

Mozilla CEO Brendan Eich urged to step down over donation to anti-gay ma...

The Independent @Independent

Show 8 more



Reply to [@varelidi](#) [@mozilla](#) [@BrendanEich](#)

Amazon's brutal workplace is an indicator of an inhumane economy



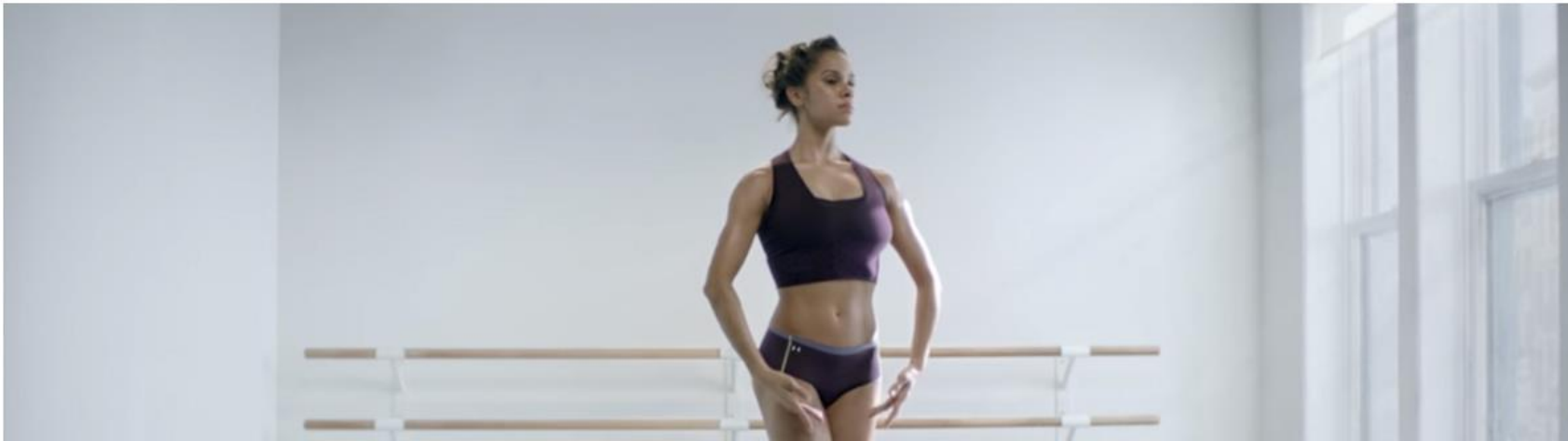


BRAND MARKETING

Under Armour's Star Endorsers Are Coming Out Against the CEO's Pro-Trump Statements

Misty Copeland, Stephen Curry and The Rock raise objections

By Katie Richards | 13 hours ago



 glassdoor®

EMPLOYEES' CHOICE AWARDS
**50 BEST PLACES
TO WORK · 2014**

 glassdoor®

EMPLOYEES' CHOICE

BEST PLACES
TO WORK

· 2014 ·

FEEDBACK PROVIDED BY EMPLOYEES

Hyperconnectivity

2010-2020: 3 billion
internet users

2025: 5 billion+ internet
users











upwork



envato studio



fiverr[®]

peopleperhour



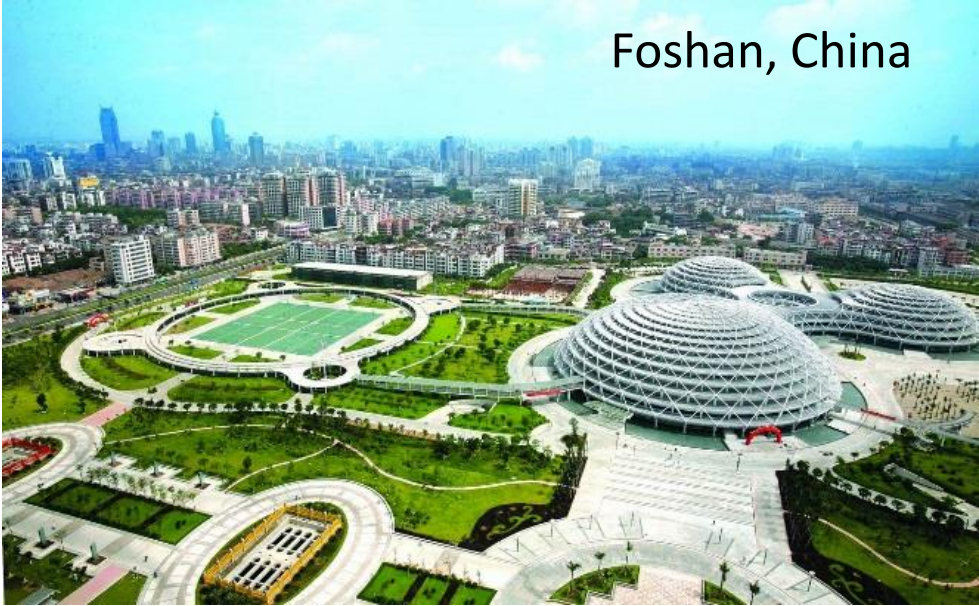
taskr.in

damongo



Staff.com

Globalisation



Foshan, China



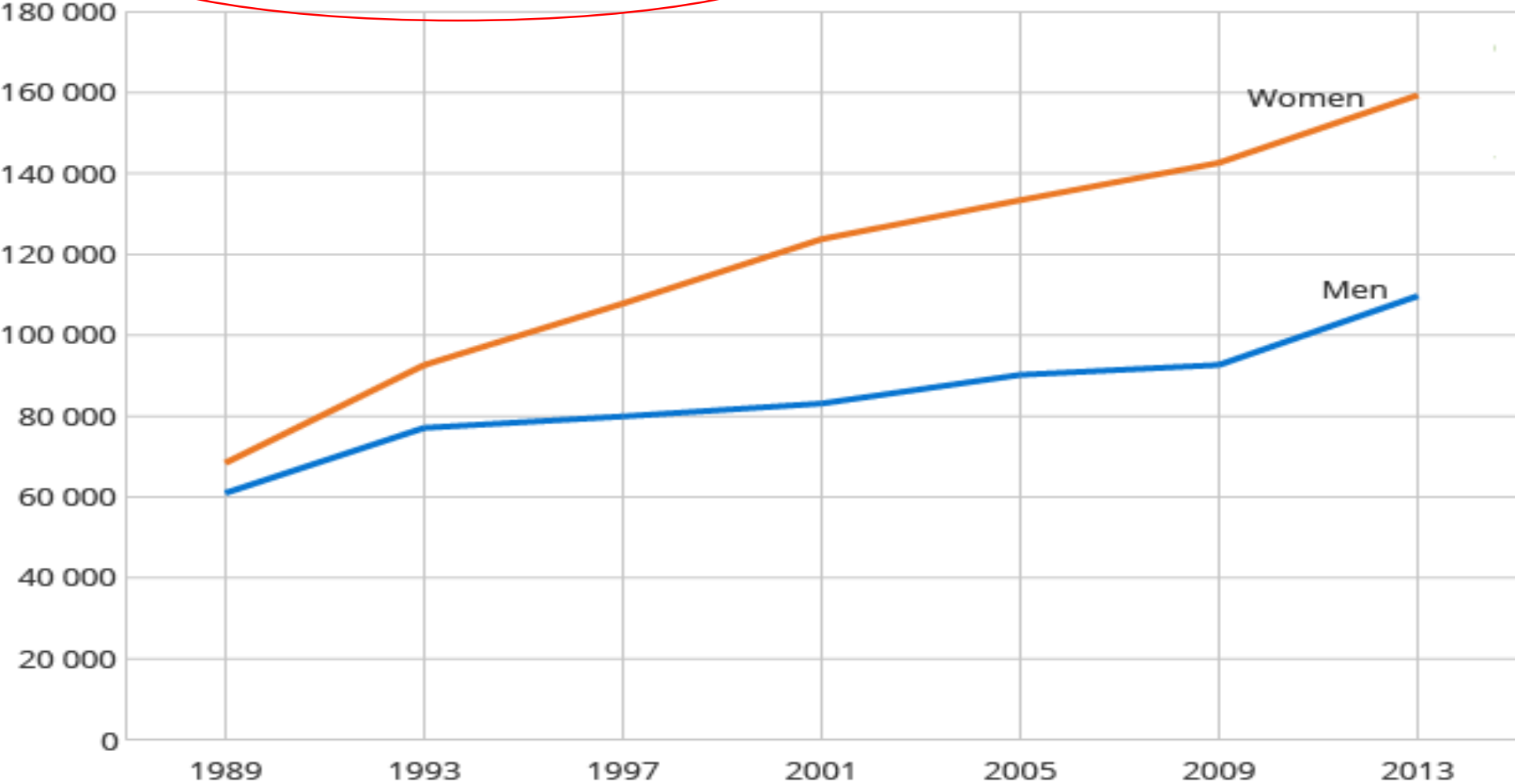
Porto Alegre

2.1



Women taking over the world

Figure 1. Number of students by gender



Source: Statistics Norway

FOUNDATIO



VICTOR
PINCHUK
FOUNDATION



VICTOR
PINCHUK
FOUN



VICTOR
PINCHUK
FOUNDATION



Khadija Niazi

L. Rafael Reif

Companies used to be powerful only if they had...



LAND



CAPITAL



RAW MATERIALS



**Probability that
computerisation
will lead to job
losses within the
next two decades**

Telemarketing: **99%**

Auditor: **94%**

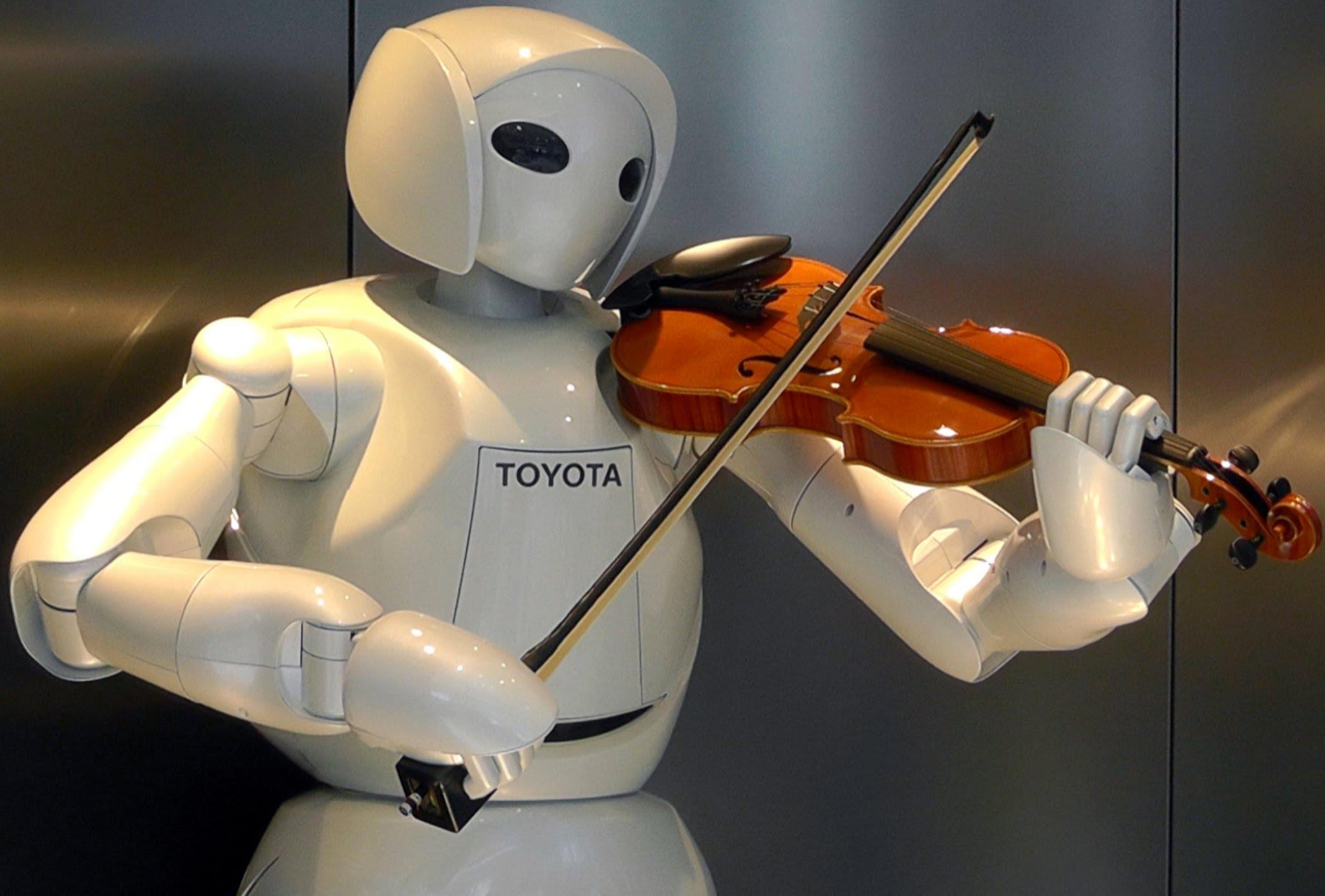
Retail sales: **92%**

Technical writer: **89%**

.

.

Dentist: **.004%**



TOYOTA

A white robotic arm is shown in the foreground, pouring a dark liquid into a glass. The background features a trade show booth with blue and white signage, including the word "robots" and "EPSON". Several people are visible in the background, some looking at the robot. The scene is brightly lit with blue and white tones.

“our device is not to make employees more efficient, it is to completely obviate them”

WHDT
WORLD
TELEVISION

FAST FOOD COMPANY DEVELOPS ROBOTS

AMANDA GABRIEL REPORTING

Artificial Intelligence



The long read

The hi-tech war on science fraud

The problem of fake data may go far deeper than scientists admit. Now a team of researchers has a controversial plan to root out the perpetrators

by Stephen Buranyi

home › tech

Artificial intelligence (AI)

Japanese company replaces office workers with artificial intelligence

Insurance firm Fukuoku Mutual Life Insurance is making 34 employees redundant and replacing them with IBM's Watson Explorer AI



Fukuoku Mutual Life Insurance believes it will increase productivity by 30% Photograph: Toru Hanai/REUTERS



38k

Justin McCurry in Tokyo

Thursday 5 January 2017
09.57 GMT

Advertisement

amazon.co.uk

[Muhammad Ali: A Memoir](#)

MICHAEL PARKINSON
HARDCOVER

★★★★★

£13.60 (plus delivery)

Prime

Human 2.0







 smartbe
INTELLIGENT STROLLER



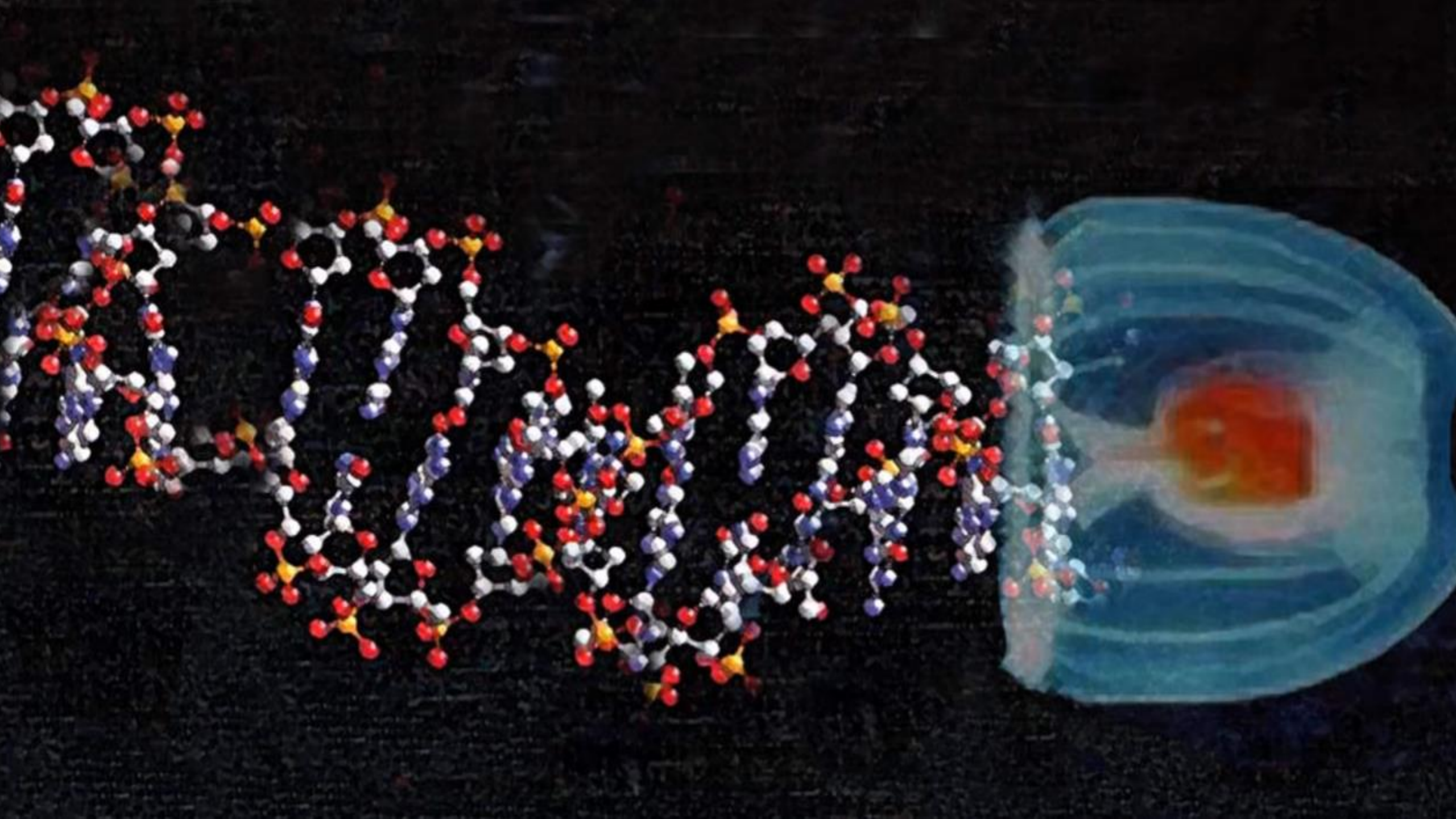


Big Nutbrown Hare had even
longer arms. "But I love you
this much," he said.

Hmm, that is a lot, thought
Little Nutbrown Hare.



FUTURE..



Scientists have eliminated HIV in mice using CRISPR

Posted 11 hours ago by Sarah Buhr (@sarahbuhr)



Next Story







Mobile



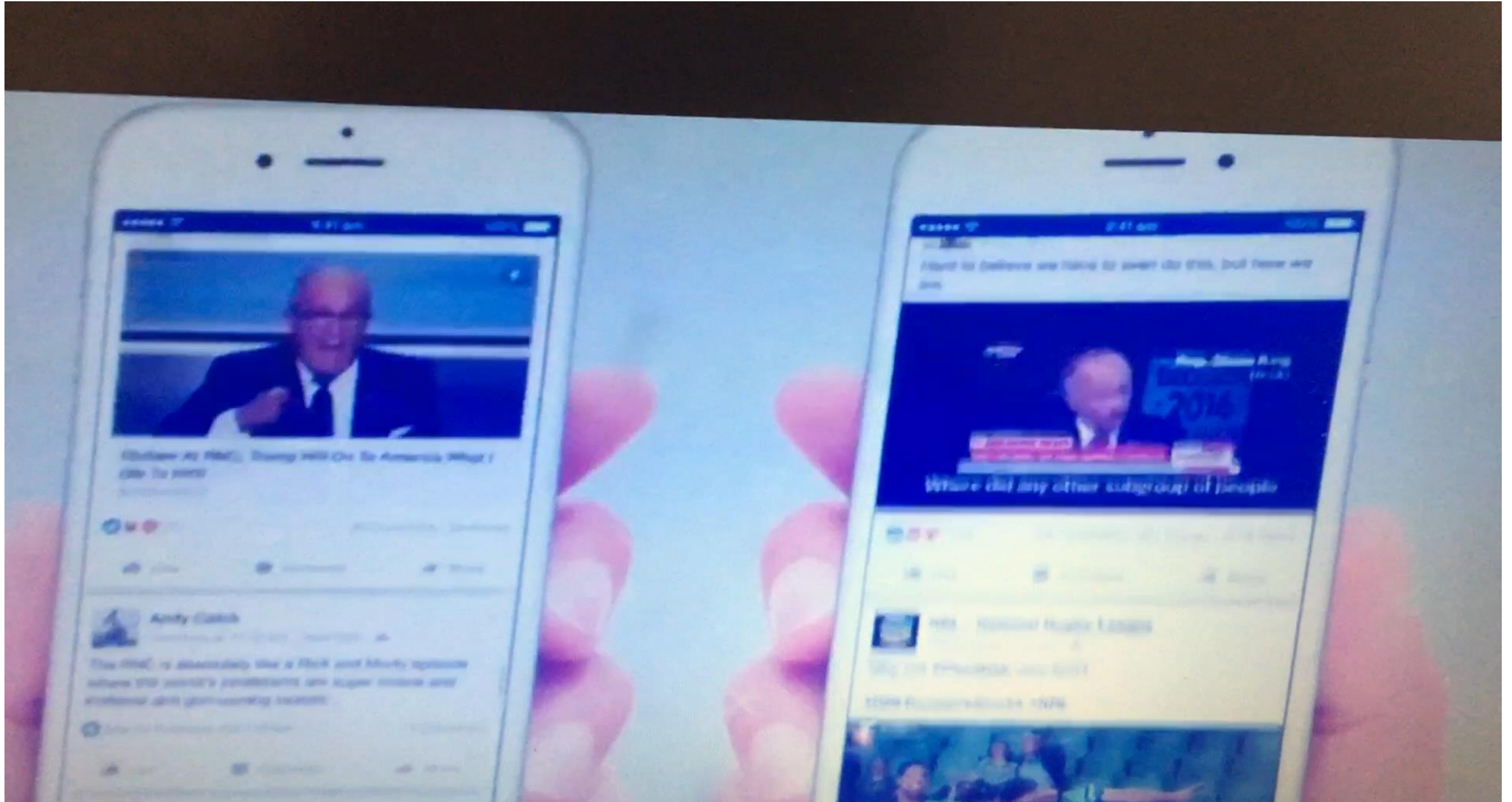


ALL MAINE METRO PASSENGERS
MUST KEEP VALID PASS OR
TRANSFER/TAKE RECEIPT
AT ALL TIMES

MTA

PLEASE MOVE

Mobile “scroll speed”



Creativity/ Ideas





Why Aetna's CEO pays workers up to \$500 to sleep

Matthew J. Belvedere | @Matt_Belvedere | Tuesday, 5 Apr 2016 | 1:53 PM ET



Attention





Diversity



chief executive



All

Images

News

Videos

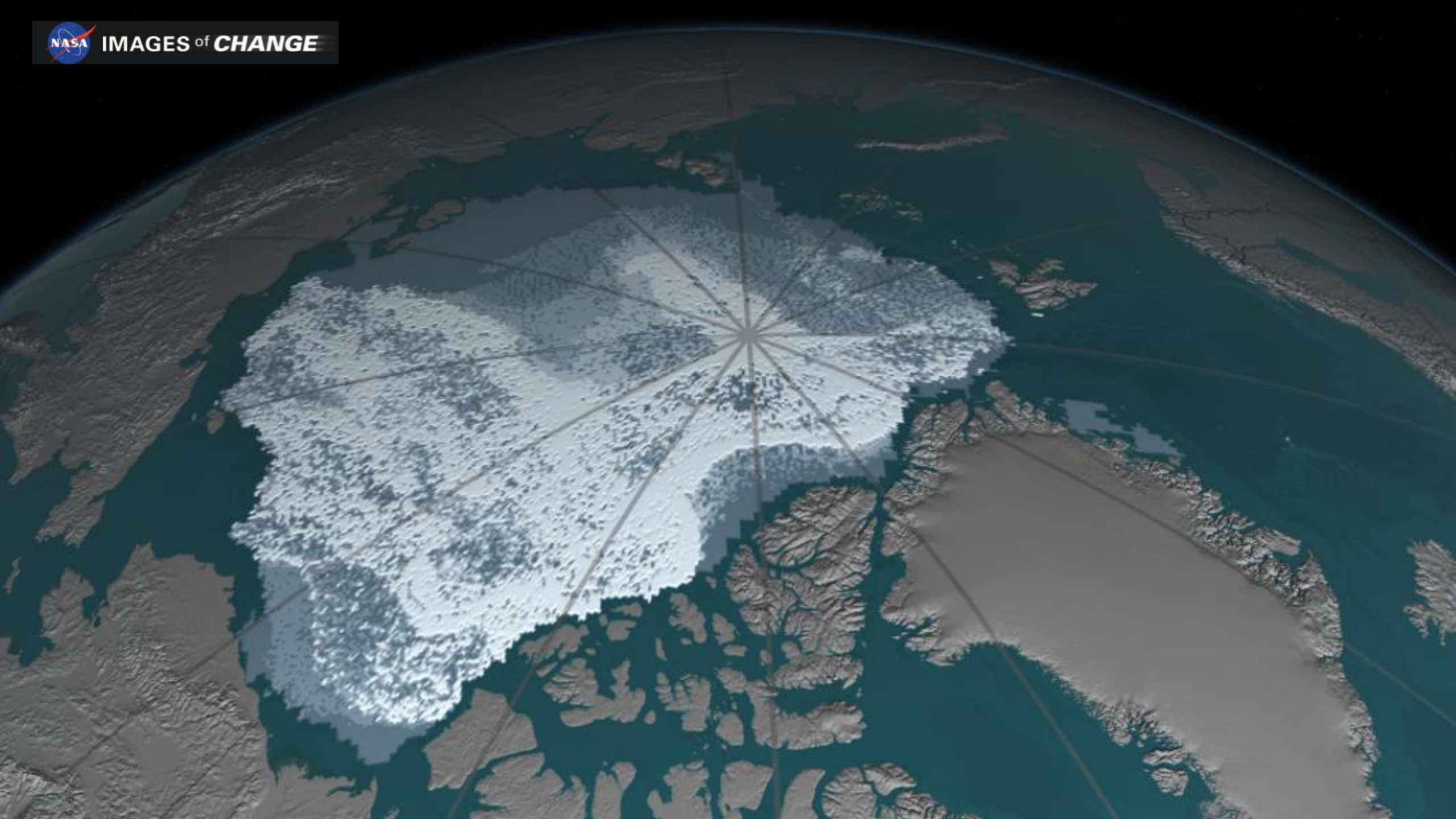
Maps

More ▾

Search tools



Collaboration





IMAGES of **CHANGE**



CONCLUSION



Thank You

Name: Peter Cosgrove
Title: Director – Cpl
Phone: +353 87 6200836
Email: peter.cosgrove@cpl.ie
Twitter: @petercosgrove